

A **PURAVANKARA** Company

PROVIDENT™



theTree
by **PROVIDENT**

OFF MAGADI MAIN ROAD, BANGALORE

Homes cradled by trees

come explore theTree

As Provident's family of happy customers continues to grow bigger, faster and stronger, we present to you our latest apartment project "**the Tree – by Provident**".

Trees as we know stand for all things good. Be it life giving oxygen that we breathe or in providing a cheerfully green ambience.

The inspiration to launch this project arose out of concern for the number of trees being cut and the rapid decline of green cover in Bangalore, a city once known for its trees and gardens.

This is why we are offering you a home nestled amidst hundreds of flowering trees. With clean air and cool surroundings, these homes will ensure every resident of a peaceful and healthy living. With a wide range of amenities on offer, strategic location and the promise of appreciation, you come home to a life that is "rooted" in truly great sense.





theTree spreads over **6 acres** of land, sheltering **560 homes** and a wide variety of flora with **338 trees**.

Be it finding your own space, or living life at your own pace, **the Tree** offers you an environment that you can truly call your very own private haven.

Come, discover space as it unfolds new dimensions that you have never experienced before.





Legend

- 1. Open air theatre
- 2. Stage
- 3. Harate kate (tree court)
- 4. Meditation pavillion
- 5. Ata ada (children's play area)
- 6. Basket ball ring
- 7. Badminton court
- 8. Access to park
- 9. 1.5 meter wide jogging track
- 10. Club house
- 11. Swimming pool (2500 sq. ft.)

ARCHITECTURE LEGEND:

- BUILDING 1**
- TYPE A 3 BEDROOM & 2 TOILET UNIT
 - TYPE A1 3 BEDROOM & 2 TOILET UNIT
 - TYPE AE 3 BEDROOM & 2 TOILET UNIT
 - TYPE AW 3 BEDROOM & 2 TOILET UNIT
 - TYPE B 2 BEDROOM & 2 TOILET UNIT
 - TYPE B2 2 BEDROOM & 2 TOILET UNIT

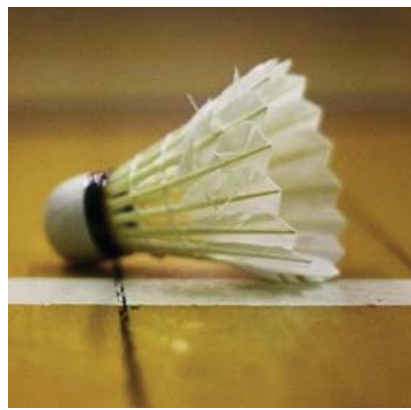
- BUILDING 2**
- TYPE A 3 BEDROOM & 2 TOILET UNIT
 - TYPE A1 3 BEDROOM & 2 TOILET UNIT
 - TYPE B 2 BEDROOM & 2 TOILET UNIT
 - TYPE B1 2 BEDROOM & 2 TOILET UNIT
 - TYPE B2 2 BEDROOM & 2 TOILET UNIT
 - TYPE C 1 BEDROOM & 1 TOILET UNIT
 - TYPE C1 1 BEDROOM & 1 TOILET UNIT



A space where calm, serene resort style living alongside a world class clubhouse echoes your quest for that perfect lifestyle. Where you escape from the mundane to a world of spacious living, with beautiful views and a stunning environment.

Landscape comes with an array of amenities

- Swimming pool
- Children play area
- Landscape gardens
- Meditation pavilion
- Resting pavilion
- Maze garden
- Open badminton court
- Basket ball ring
- Seating alcoves
- Open air theater
- 2m wide jogging/walking track
- Eco garden
- Stream promenade
- Club house with Well equipped Gym, Table tennis / Billiards Multipurpose hall Party hall crèche



*All the images are conceptual



A multitude of
quality finishes...



Building structure

- RCC framed multi-storied structure, apartments spread over from basement, ground floor to 10 floors
- Parking in basement, ground and on surface
- Staircase and lifts in each wing connect from basement/ground to all level
- One lift with 8 passengers capacity & one lift with 13 passengers capacity for each wing
- Basement & Ground floor entrance lobby comes with granite / marble / vitrified flooring
- Granite for basement & ground floor lobbies
- Kota stone for all upper floor staircases, typical floor lobbies / corridors will have vitrified tiles
- Exterior fascia of building will have plaster with water proofing compound and painted with exterior acrylic emulsion paint



Living and dining

- Walls will be plastered smoothly in CM finished with lime neeru, painted in oil bound distemper
- Ceiling will have oil bound distemper
- Vitrified tiles flooring of 600mm x 600mm size
- Main door is polished Sal wood frames with skin moulded one side polished, panelled shutter with hinges, tower bolt, door stopper, bush, lock and security eye, stainless steel hardware
- Two track UPVC / aluminium windows will be glazed with hinge / sliding shutters
- Living will have two light points, one fan point and one 5 amp point, dining will have two light points, one fan point and one 5 amp point, calling bell point, one telephone point, one TV point

Balcony

- Ceramic tiles flooring
- Living room balcony will have two tracks UPVC / aluminium sliding door
- Balcony will have M.S. railing
- One light point will be given in balcony



*All the images are conceptual

living

Bedroom specifications

- Walls will be plastered smoothly in CM finished with lime neeru, painted in oil bound distemper
- Ceiling will have oil bound distemper
- Vitrified tiles flooring of 600mm x 600mm size in all bedrooms and passages leading to bedrooms
- Painted Sal wood frames with painted flush shutters with hinges, door stopper, bush, cylindrical knob with key, tower bolt
- Two track UPVC / aluminium window will be glazed with hinge / sliding shutters
- Two light points, one fan point and one 5 amp point in all the bedrooms. One telephone point and one TV point will be given in master bedroom. One split AC point in master bedroom

Toilets

- Walls will be plastered smoothly in CM finished with lime neeru, painted in oil bound distemper
- Ceiling will have oil bound distemper
- Glazed ceramic tiles up to false ceiling in shower area and floor to 1.2 m height in other area
- Painted Sal wood frames with painted flush shutters with hinges, bush, stainless steel hardware
- Cylindrical knob without key
- Good quality white shade ceramic ware for water closet (EWC) and wash basin with bottle trap / pedestal
- EWC includes seat cover and ceramic/PVC tank provision of health faucet point for all toilets, good quality CP fittings, one light point and one 6 amp point in each toilet
- There will be provision for geyser point in toilet
- Exhaust fan point provision in toilets



*All the images are conceptual

bed

Kitchen

- Walls will be plastered smoothly in CM finished with lime neeru, painted in oil bound distemper
- Ceiling will have oil bound distemper
- Dadoing up to 2' height in glazed tiles above kitchen platform of black granite counter with half bull nose
- Vitrified tiles flooring of 600mm x 600mm size
- Two track UPVC / aluminium windows will be glazed with hinge / sliding shutters
- One light point, two 6 amp and two 16 amp point, stainless steel sink with single bowl and drain board in kitchen counter

Utility

- Ceramic tiles flooring
- Two tracks UPVC / aluminium window will have glazed hinged/sliding shutters
- There will be provision for one light point and one 16 amp for washing machine point in utility
- Exhaust fan point provision in kitchen / utility will be provided



*All the images are conceptual

kitchen

Power supply and backup

- ISI marked cables using copper wiring through PVC conduits concealed in walls and ceilings
- Good quality modular electrical switches
- All 1 BHK flats comes with 2 KW power with energy meter, 2 BHK flats with 3 KW power with energy meter and 3 BHK flats with 5 KW power with energy meter
- Electrical room will have panel boards, meters, etc. as per BESCO norms
- Each 3 BHK units to have 5000W KPTCL power supply and 2 BHK units to have 3000W KPTCL power supply and 1 BHK unit to have 2000W KPTCL power supply
- Backup for one light and fan point in living / dining area in each flat
- Standby generator for 50 % of lighting in common areas, 100% for lifts and pumps



*All the images are conceptual

kid

Unit Plans



BUILDING 01 - TYPE A
3 BEDROOM + 2 TOILET
SALEABLE AREA :1318 SFT

1. LIVING/DINING	24'X11' 7.32X3.35 M
2. SITOUT	4'X9'4" 1.22X2.85 M
3. MASTER BEDROOM	11'X12' 3.35X3.65 M
4. TOILET	5'X8' 1.5X2.44 M
5. TOILET	5'X8' 1.5X2.44 M
6. BEDROOM	10'X12' 3.05X3.65 M
7. BEDROOM	11'X10' 3.35X3.05 M
8. KITCHEN	7'10"X8' 2.39X2.44 M
9. UTILITY	4'X8' 1.22X2.44 M



BUILDING 01 - TYPE A1
3 BEDROOM + 2 TOILET
SALEABLE AREA : 1133 SFT

1. LIVING / DINING	21'x12' 4" 6.40x3.76
2. KITCHEN	8' 2"x9' 2.49x2.75
3. BEDROOM	8'x7' 4" 2.44x2.24
4. TOILET	8'x5' 2.44x1.52
5. M. BEDROOM	11'x12' 3.35x3.65
6. BEDROOM	11'x10' 3.35x3.05
7. SITOUT	8' 6"x4' 2.59x1.22
8. UTILITY	4'x7' 5" 1.22x2.24

Unit Plans



BUILDING 01 - TYPE B
2 BEDROOM + 2 TOILET
SALEABLE AREA :1116 SFT

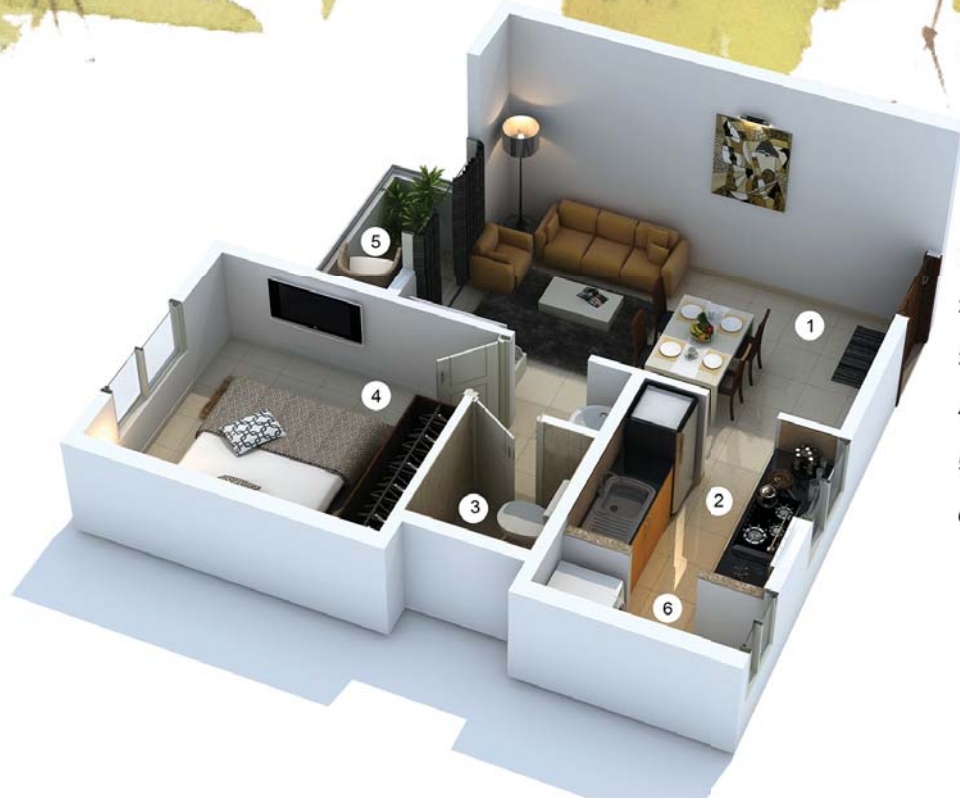
1. LIVING/DINING	24'X11' 7.32X3.35 M
2. SITOUT	4'X9'4" 1.23X2.85 M
3. MASTER BEDROOM	11'X12' 3.35X3.65 M
4. TOILET	5'X8' 1.5X2.44 M
5. TOILET	5'X8' 1.5X2.44 M
6. BEDROOM	10'X10'10" 3.05X3.30 M
7. UTILITY	8'2"X3'8" 2.49X1.12 M
8. KITCHEN	8'X8' 2.44X2.44 M



BUILDING 01- TYPE B2
2 BEDROOM + 2 TOILET
SALEABLE AREA 1005 SFT

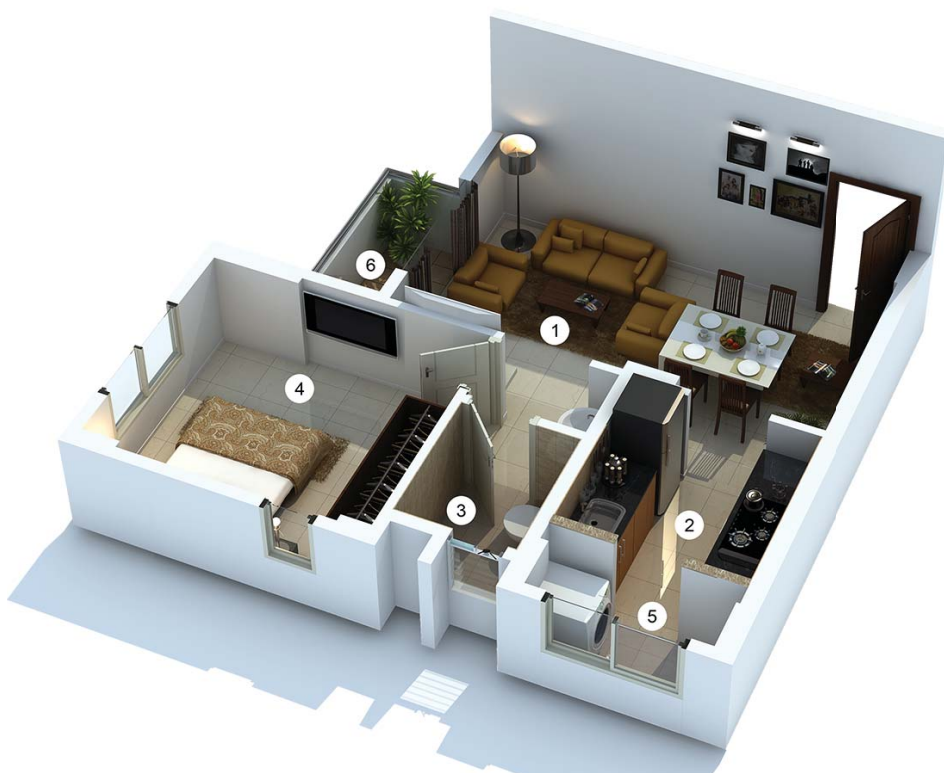
1. LIVING/DINING	10'X21' 3.05X6.40 M
2. TOILET	8'X5' 2.44X1.5 M
3. MASTER BEDROOM	12'X11' 3.66X3.35 M
4. TOILET	8'X5' 2.44X1.5 M
5. BEDROOM	10'X12' 3.05X3.65 M
6. SITOUT	5'10"X4'10" 1.78X1.48 M
7. UTILITY	8'X3'8" 2.44X1.12 M
8. KITCHEN	8'X8' 2.44X2.44 M

Unit Plans



BUILDING 02 - TYPE C
1 BEDROOM + 1 TOILET
SALEABLE AREA 605 SFT

1. LIVING / DINING	10'x16' 6"
	3.05x5.04
2. KITCHEN	7'x7'
	2.13x2.13
3. TOILET	5' 6"x4' 6"
	1.68x1.38
4. BEDROOM	10'x11'
	3.05x3.35
5. SITOUT	7' x3'
	2.18x0.93
6. UTILITY	2' 8"x7'
	0.83x2.13



BUILDING - 02 - TYPE - C1
1 BEDROOM + 1 TOILET
SALEABLE AREA 605 SFT

1. LIVING / DINING	10'x16' 6"
	3.05x5.04
2. KITCHEN	7'x7'
	2.13x2.13
3. TOILET	5' 6"x4' 6"
	1.68x1.38
4. BEDROOM	10'x11'
	3.05x3.35
5. UTILITY	2' 8"x7'
	0.83x2.13
6. SITOUT	7' 2"x3'
	2.18x0.92

Unit Plans



BUILDING 02 - TYPE B1
2 BEDROOM + 2 TOILET
SALEABLE AREA 903 SFT

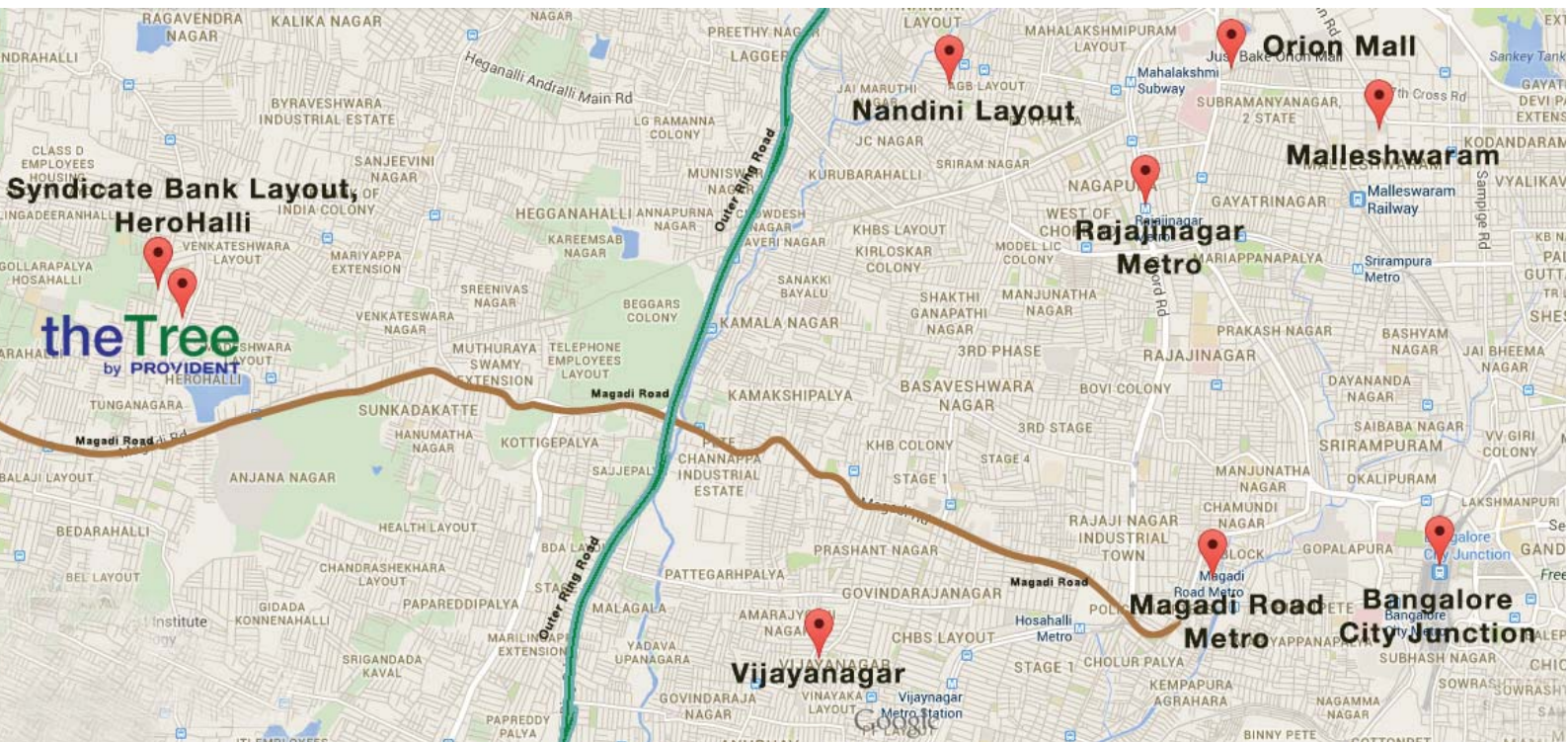


1. LIVING / DINING	16'x10' 4.88x3.05
2. KITCHEN	8'x7' 2.45x2.14
3. UTILITY	3' 8"x7' 1.12x2.14
4. TOILET	4' 6"x7' 1.38x2.14
5. M. BEDROOM	11'x10' 3.35x3.05
6. BEDROOM	10'x10' 3.05x3.05
7. TOILET	7'x4' 6" 2.14x1.38
8. SITOUT	3' 6"x6' 9" 1.07x2.08

your new home awaits at

theTree

by PROVIDENT



Site Address

the Tree by Provident

2nd Main Road

Syndicate Bank Layout

Ward no.72

Herohalli Village

Bangalore-560091



Our projects

Ready to occupy

Provident Welworth City - Yelahanka Dodaballapur road, Bangalore.

Ongoing

Provident Sunworth - Mysore road-Nice Junction, Bangalore.

Provident Harmony - Off Thanisandra Main Road, Bangalore.

Provident Skyworth - Derebail, Mangalore.

Provident Green Park - Selvapuram, Coimbatore.

Provident Cosmo City - Pudupakkam, behind Siruseri IT Park, OMR, Chennai.

PROVIDENT™

PROVIDENT HOUSING LIMITED,

No. 39, Ulsoor Road,
Bengaluru - 560042

Tel : 080 4400 4400 / 1860 258 4444
E -mail : sales@providenthousing.com
www.providenthousing.com

The images used are only indicative

The brochure is conceptual in nature and is by no means a legal offering. The promoters have all the right to change, alter, delete or add any specification mentioned herein. Or the latest information, please contact the sales representative. This is a copyright material for only Provident Housing Limited.

The financial institutions that have approved the project are: ICICI, AXIS, SBI, BOB, CANARA Bank, HDFC, LIC HFL, SBM, Allahabad bank and others

CREDAI
BENGALURU